

# BEAUTIFIL Injectable



The One True Bioactive Injectable Restorative



# BEAUTIFIL Injectable

**BEAUTIFIL Injectable X** is re-engineered as the next-generation bioactive universal injectable restorative that signals a new era in restorative dentistry by offering extra strength, exceptional durability, life-like aesthetics and lasting self-polishing gloss with the unique “inject as you shape” convenience.

**Boost  
Efficiency**

**Simplify  
Restorations**

**Save  
Time**

*Revolutionize your daily workflow with Smart Solutions*

**Prepare >>> Inject & Shape >>> Finish**

## In a League of Its Own

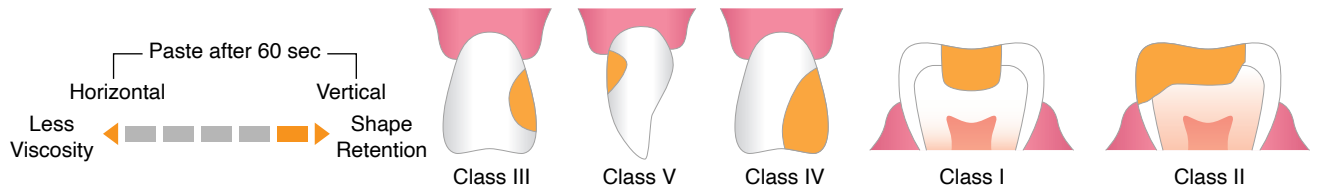
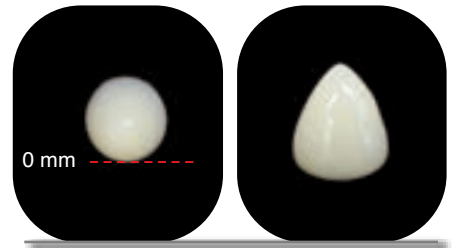
- Convenience with “Inject as you Shape”
- Save time & drive efficiency
- Bioactive nano S-PRG fillers provide lasting anti-caries benefits
- Predictable Aesthetics, Seamless shade match with self-polishing gloss
- Remarkable strength for Anterior / Posterior restorations



# Two Distinct Viscosities

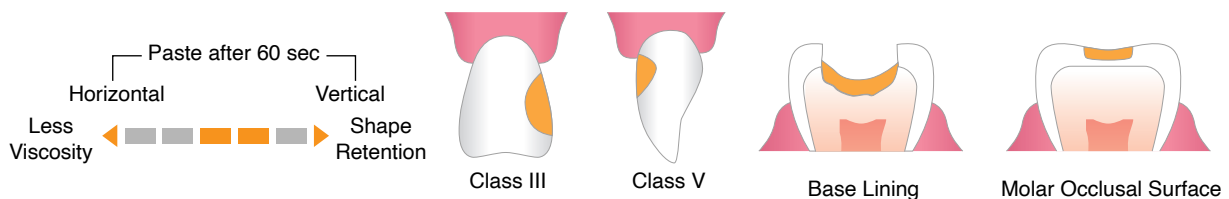
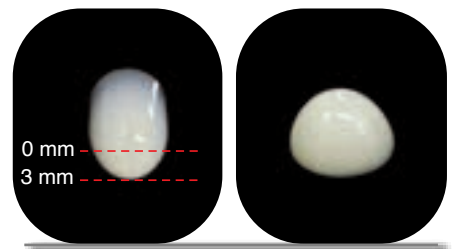
## BEAUTIFIL Injectable X (Universal Restorative)

- Restoration of Anterior / Posterior teeth
- Class I, II, III, IV, V, VI
- Pediatric and geriatric dentition
- Tooth wear (Abrasion, Erosion, Abfraction)
- Minimally invasive cosmetic restorations
- Diastema closure
- Tooth size and shape modification
- Tooth surface defects
- Smile rejuvenation
- Cuspal restoration
- Post-ortho corrections including Black triangle closure
- Composite Tooth Splinting
- Repair of Composite or Ceramic restorations



## BEAUTIFIL Injectable XSL (Self-Levelling high strength flow)

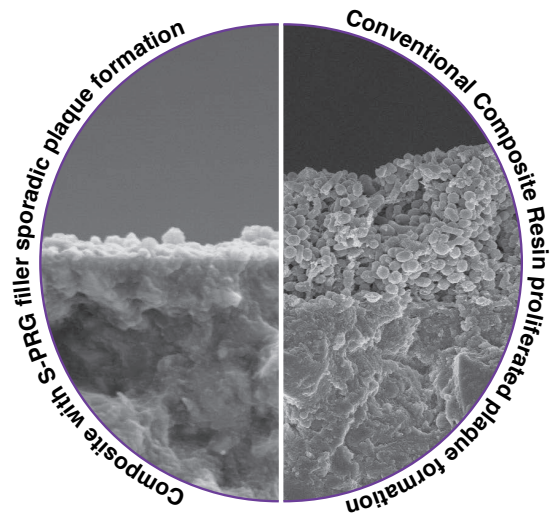
- Class III, IV, V
- Palatal shell technique
- Base & Liner
- Gingival box of Class II
- Placement of orthodontic brackets
- Composite Tooth Splinting
- Restoration of tooth wear (Abrasion, Erosion, Abfraction)



# Chemistry Behind BEAUTIFIL Injectable

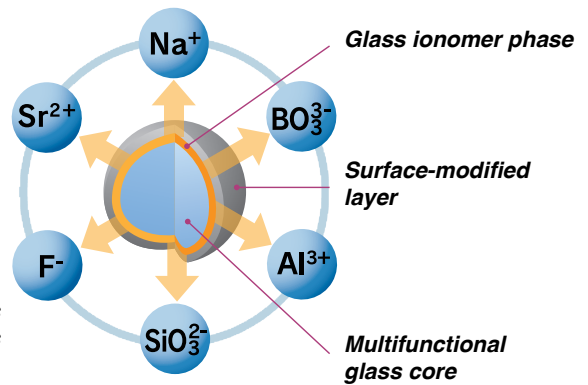
**BEAUTIFIL Injectable X & XsL** feature a novel filler technology that involves controlled miniaturization and uniform nano-silanization for higher filler load and optimal filler-resin ratio for superior strength and durability.

The proprietary bioactive nano S-PRG (Surface Pre-Reacted Glass ionomer) filler technology provides an optimal balance of light transmission / diffusion for a perfect shade match and bioactive benefits. The homogenous nano-filler complex facilitates an easy and lasting self-polishing natural gloss.



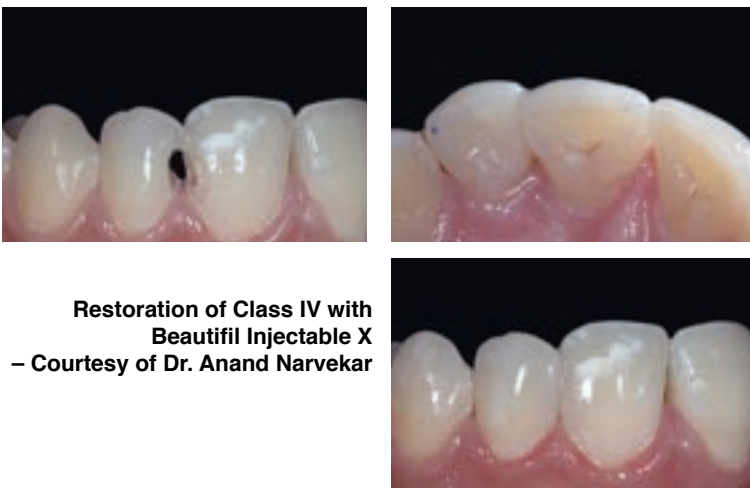
Photographs courtesy of Prof. Koji Yamamoto of the ASAHI University

*\*S-PRG Filler Technology Imparts Bioactive Anti-plaque benefits*

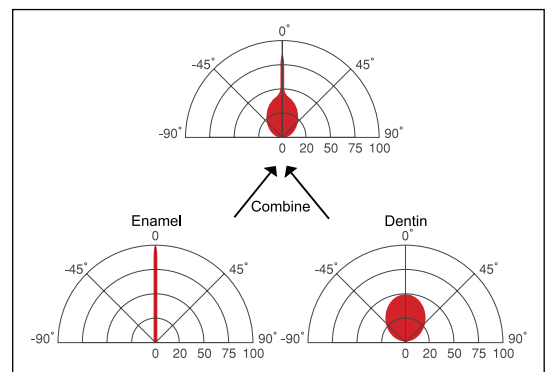
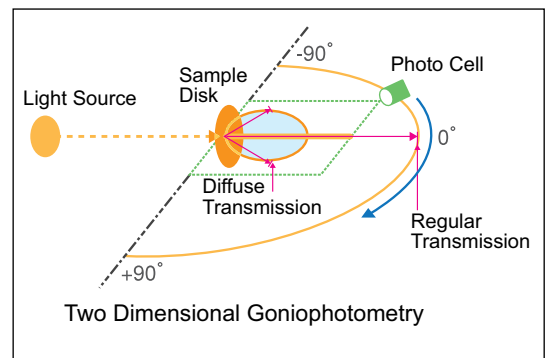


## Exceptional Aesthetics that Last

**BEAUTIFIL Injectable X** exhibits a high level of natural aesthetics with life-like shades that merge seamlessly with natural tooth for invisible restorations. Shades are stable with no shift in translucency pre- and post-cure.



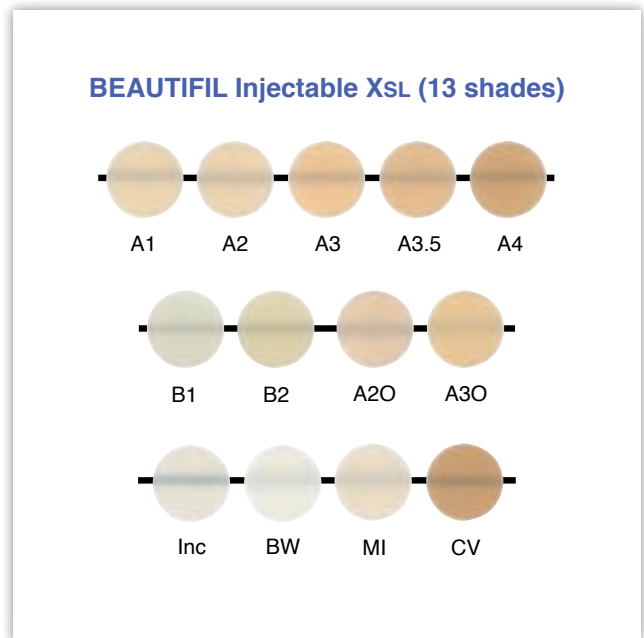
Restoration of Class IV with  
Beautiful Injectable X  
– Courtesy of Dr. Anand Narvekar



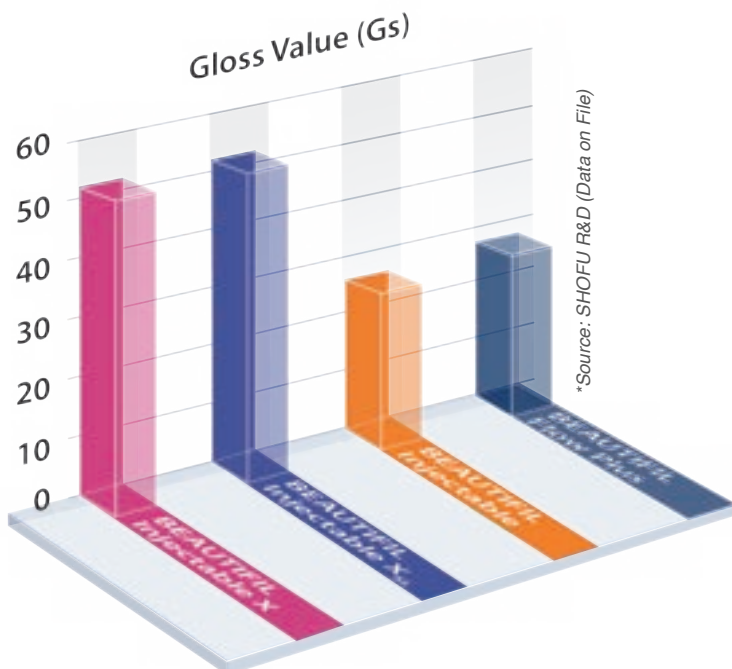
Light transmission and diffusion

### 3 Levels of Opacity to meet all clinical needs

- Opaque shades to mimic deep dentin opacity
- Universal shades for universal application
- Universal enamel to simulate translucency of natural enamel



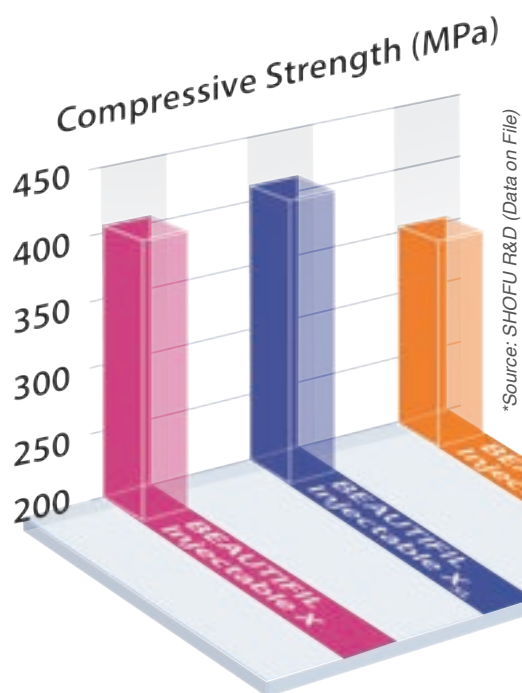
The shades A1-D2 correspond to the VITA® Classical Shades.



**High gloss observed post-cure  
(without polishing)**

**BEAUTIFIL Injectable X & XSL** exhibit effortless polish to an unparalleled natural luster with self-polishing ability for lasting aesthetics with higher stain resistance.





## Exceptional Strength that Endures

The novel nano-filler-silanzation technology and resilient resin matrix imparts superior mechanical properties to Beautifil Injectable X, enabling universal application in all classes of cavities. Homogeneous filler particle dispersion assures greater longevity and superior hardness to withstand occlusal stress.



## Inject as you shape

**BEAUTIFIL Injectable X** features an “Inject as you Shape” function with the same time-tested handling qualities of Beautifil Injectable to effortlessly create cusps, marginal ridges and conform to natural tooth anatomy.



# Clinical Case

Restoration of multiple carious lesions in anterior aesthetic zone  
– Photograph courtesy of Dr. Anand Narvekar



**BEFORE**



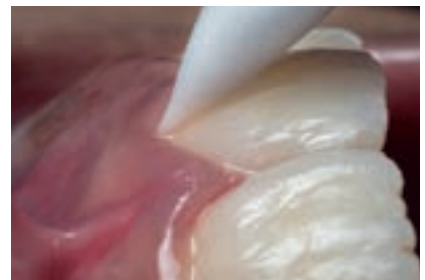
**AFTER**



**PREPARE**  
with Shofu Diamond Burs



**INJECT**  
to restore



**FINISH & POLISH**  
with OneGloss

Posterior Class II Restoration  
– Photograph courtesy of Dr. Melvin Sia



**BEFORE**



**AFTER**



**PREPARE**  
with Shofu Diamonds Burs



**INJECT**  
to restore



**FINISH & POLISH**  
with OneGloss

# Order Information & Related Products



BEAUTIFIL Injectable X Syringe 2.2g	
SHADE	REF
A1	Y2501
A2	Y2502
A3	Y2503
A3.5	Y2504
A4	Y2505
B1	Y2506
B2	Y2507
C2	Y2508
D2	Y2509
SA0.5	Y2500
SA0.50	Y2510
A10 (Opacious A1)	Y2511
A20 (Opacious A2)	Y2512
INC (Incisal)	Y2513
BW (Bleach White)	Y2514

BEAUTIFIL Injectable XSL Syringe 2.2g	
SHADE	REF
A1	Y2521
A2	Y2522
A3	Y2523
A3.5	Y2524
A4	Y2525
B1	Y2526
B2	Y2527
A20 (Opacious A2)	Y2530
A30 (Opacious A3)	Y2531
CV	Y2535
MI	Y2534
INC (Incisal)	Y2532
BW (Bleach White)	Y2533



BeutiBond Xtreme Set [REF Y2448]



FL-BOND II Complete Set [REF 1306]



Super-Snap X-TREME Technique Mini-Kit [REF N0509]



SILICONE One Gloss [REF 0171]



OneGloss Set [REF 0180]



Barrier Sleeves 50pcs [REF 2070]



Official Partner



**SHOFU DENTAL ASIA-PACIFIC PTE. LTD.**

1 Science Park Road, #01-01 / 02 The Capricorn, Singapore Science Park II,  
Singapore 117528 Tel: (65) 6377 2722  
eMail: mailbx@shofu.com.sg www.shofu.com.sg



BIX20230830